



WESTONKA

Issue 14 October, 2011

Hockey

LETTER FROM THE PRESIDENT

Welcome to the 2011-2012 hockey season!!!

By the time you are reading this letter all of our travel team try outs have completed, our oldest Mites have been on the ice a few weeks while our youngest Mites begin skating in early November. Yes, another hockey season is here!!!!

The focus now shifts to making this upcoming season the best experience for all involved. Let's all support the numerous coaches who are volunteering their time to teach our players. How about our team managers too?? They play a vital role in helping organize all of the activities that each team participates in. Thanks to each of you for helping make our association run.

Don't forget that each and every family this year from the youngest Mites to the oldest Bantams will be

participating in our DIBS volunteer program. Check the web site for opportunities to earn your hours.

Locker Room Attendants (background checks required), concession workers, outdoor ice, Jamboree and tournament helpers are just a few examples of activities that qualify for DIBS hours. The web site is updated frequently, so keep checking. Any questions, please contact Judy Hatchett, our DIBS Coordinator.

Our web site continues to be the main source of information regarding our association. Please check it frequently for updates.

All of us on the board hope each of you have a fantastic experience this season. Please reach out to any board member should you have any questions or comments.

Best of Luck!!

Randy Lee
President, MWAHA

ABBY BRUSTAD



Abby Brustad, Mound Westonka eight grader (now ninth grader) was selected a Top102 Minnesota U15 Hockey Player. To achieve this honor, she first tried out and made the all District 3 U15 hockey team. This team played a series of seeding games against other district all-star teams which then culminated into the Minnesota Hockey Spring U15 Festival. Players from the Spring Festival were selected to participate in a weeklong training camp at Minnesota State University in Mankato. This training camp was held June 11th-16th. Players with the highest rankings were then selected to represent Minnesota at the USA Hockey National Select 15 Development camp in Rochester, New York.

Because this happened this spring we didn't have a chance to say, "Way to go Abby"!

IN THIS ISSUE

- Letter from the President....Page 1
- Spotlight-Abby Brustad.....Page 1
- Association News.....Page 2
- MN Hockey Essay..... Page 3
- Yes Westonka.....Page 3
- MWAHA Sponsor.....Page 3



OUTDOOR ICE



Less than two months and all of our kids will be able to skate at Shirley Hills!!! The outdoor ice crew has been working all summer to make sure everything is in place. If you're interested in helping, please sign up via the DIBS system on the web site.

ICE SCHEDULING FYI

Remember to check the end times for your practices this year. In an effort to reduce the number of times each family has to drive to the rink, there are some practices that are now 75 and 90 minutes instead of the more traditional 60 minutes.



EQUIPMENT COORDINATOR

Dave Olson, a PeeWee parent and non-board member, has volunteered to manage all of the equipment for our association this year. Thanks Dave, for taking on this very important role!!!

LETTERMEN'S APPAREL

Please visit the apparel tab on the web site to see all of the new Westonka Hockey apparel that's available this year.

Don't forget as members of our association you get free skate sharpening all year at Lettermen's in Plymouth as well as special "Member" pricing on product.

Lettermen's should also have Westonka in-stock apparel in their store too!

Cindy Lund has so graciously volunteered to be our apparel coordinator, so if you have any questions you can contact her.

Thanks Cindy!

NON-PARENT HEAD COACHES POLICY

Non-Parent Head Coaches Policy -- For the first time, the board has approved a policy that will pay non-parent head coaches. The competition for non-parent head coaches has increased dramatically and we felt we needed to have a policy in place to attract non-parent coaches to our association. If your travel team has a non-parent head coach, there will be an additional fee that each player will need to pay and the amount varies by play level. Team Manager's will have all of the details.

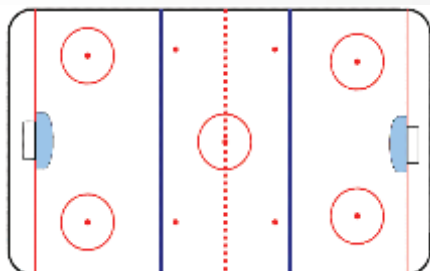
NEWSLETTER

Team Managers, please email all team news including scores, pictures and highlights to Dave Goulet so that we can include them in our Travel Team News Section of the monthly newsletter. Players love to see their accomplishments in print!

Dave's email can be found on the MWAH web site under the Board tab. Team managers will be getting an email reminder of all MN Hockey Awards that we also recognize, along with submissions dates for each month.



Remember FREE skate sharpening at LETTERMEN'S in Plymouth as a Member of MWAH!
(Sign Up at Store Location)



2011-2012 MWAH BOARD

Randy Lee, Scott Ellingboe, Mark Peterson, Todd Courneya, Tom McGlynn, Mark Smith, Dave Goulet, Judy Hatchett, Gary Pioske, Ron Odash & John Ryan

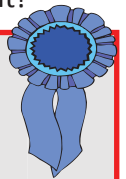


HEY KIDS..LOOKING FOR
SOMETHING TO DO?

MINNESOTA HOCKEY ESSAY CONTEST

2012 Minnesota Hockey HEP Essay Contest is underway - *"I love to play hockey for _____ hockey association because..."*

Hockey players, put your stick down for a few minutes and grab a pen or pencil...the Minnesota Hockey HEP Essay Contest is back! The theme for the 2012 contest is *"I love to play hockey for _____ hockey association because..."* The community-based hockey model in Minnesota is unique and special. Wearing the colors of your community, whether its Virginia, Woodbury, Anoka, or Fergus Falls, and developing as a hockey player alongside your neighborhood friends and classmates is truly a Minnesota experience. Many point to Minnesota's community-based structure as one of the primary reasons why hockey flourishes in our state (the ice rink-friendly temperatures in January help a bit too!). Let us know what you like about it!



2012 MN HOCKEY HEP ESSAY CONTEST DETAILS

- Please complete this sentence in 250 words or less.
- A panel of judges will select three finalists and one of the finalists will be randomly selected to have a dream day with their teammates at the Xcel Energy Center during the 2012-13 season!
- The three final essays will be featured on Fox Sports North during the *2012 Hockey Day Minnesota*
- Broadcast on January 21st, 2012. The random winner will also be announced during the *2012 Hockey Day Minnesota* broadcast.
- In addition, all three finalists will have the opportunity to attend the Minnesota Wild v San Jose Sharks game on Tuesday, January 10th.
- The deadline to submit your essay is **Wednesday, December 14th, 2011.**
- Please direct any questions to info@minnesotahockey.org
- Please mail your completed essay to the address below. Please be sure to include name, hockey association, team/level, address, phone #s, and email address with your entry.

Minnesota Hockey

Att: HEP Essay Contest
317 Washington Street
St. Paul, MN 55102-1609

SUPPORT OUR SCHOOLS



Smart management of our school investment!

Vote November 8th 2011!

More information can be found at www.yeswestonka.com



Proud Sponsor of Mound Hockey