



ABERDEEN HOCKEY ASSOCIATION

Aberdeen Cougar Hockey

November 1st, 2011

Dear AHA Members,

Each year since I have been involved with the Board of Directors for AHA, I have received questions on the financial status and structure of AHA. The questions are general, but here are a few that are common.

Where does the money come from? Where does the money go? Why can't we allow for more ice time during the season? Why can't we have ice longer? Can we lower registration fees? Why do we have to do fundraising? Why are you so focused on expenses? Etc... OK, I am sure that you get the general direction of the questions.

I thought I'd take the last fiscal year and the current fiscal year budget and show a general breakdown of where the money comes from, and where the money goes.

Our fiscal year runs from May 1st through April 30th, so it coordinates with the hockey season, but not the calendar year.

For the 2011-2012 fiscal year, we anticipate our expenses to be roughly \$400,000. We anticipate that there will be about 200 registrations for the 2011-2012 fiscal year.

Simple math would say that the fee structure would be roughly \$2,000 per registered skater. This would be an approach to fund the cost of running our facilities, and is the approach that many hockey associations take.

However, AHA over the years has focused on funding mechanisms to keep registration fees as low as possible. As you will see, the registration fees make up only a small part of the income, and would be a longshot short of funding the association at the current levels. This is why it is so important for everyone to do their part with volunteering, fundraising, and doing their part to control costs.

On the following pages, I have put together pie charts that will help show the picture of where the money comes from, and where the money goes.

Thank you for your time and attention to these matters. I truly hope that this helps the membership understand the magnitude and importance of these items.

Best Regards,

Duke Witte

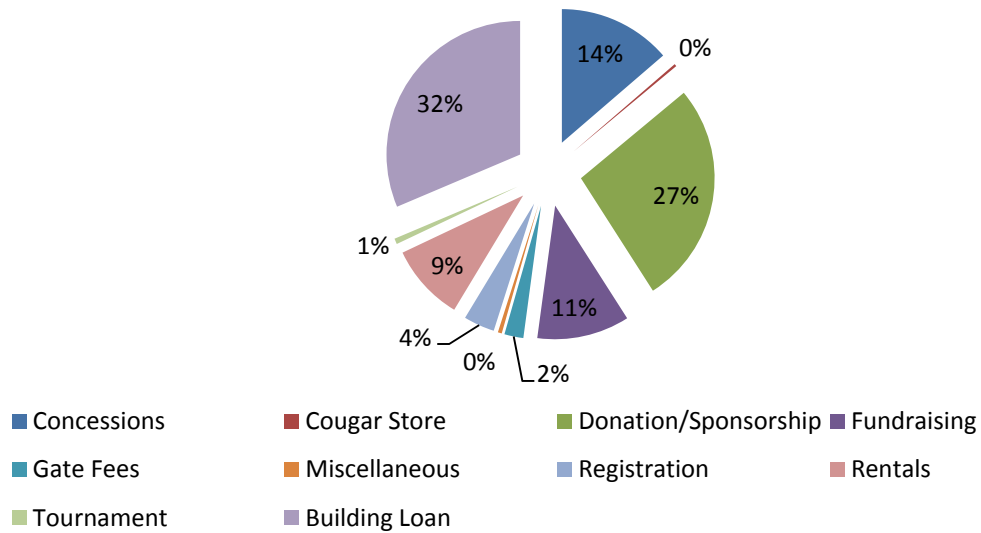
President, Aberdeen Hockey Association



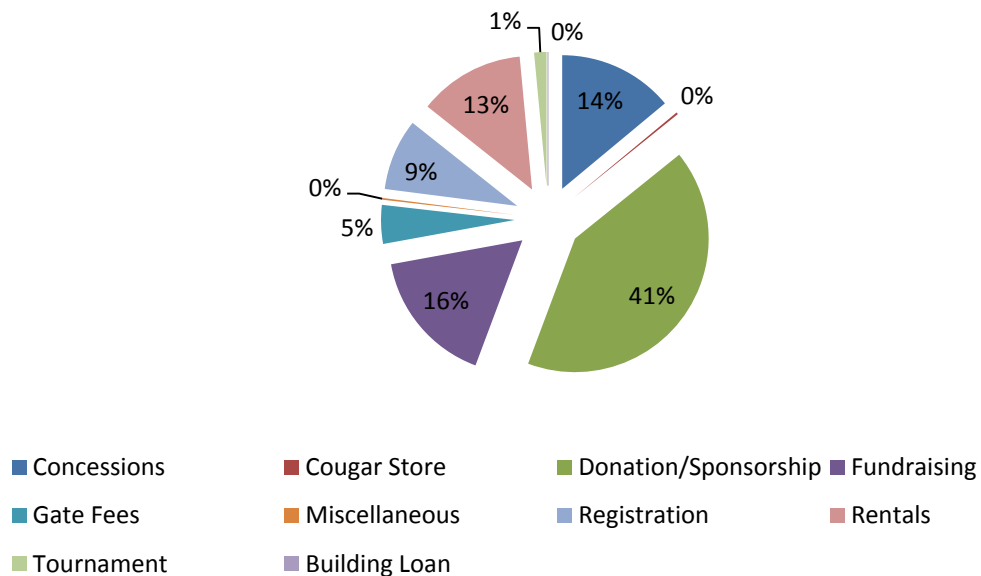
ABERDEEN HOCKEY ASSOCIATION

Aberdeen Cougar Hockey

2010-2011 AHA Income Sources



2011-2012 AHA Income Sources

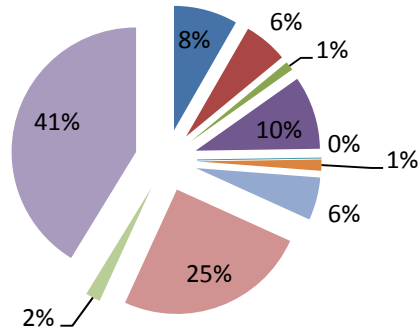




ABERDEEN HOCKEY ASSOCIATION

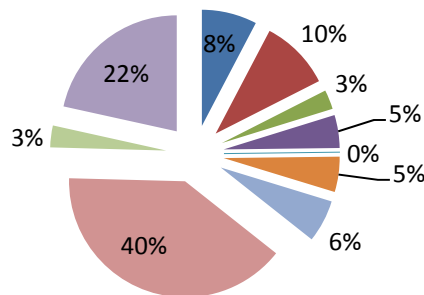
Aberdeen Cougar Hockey

2010-2011 AHA Expense Sources



- Administrative
- Coaching/Referee
- Equipment
- Rink Improvement
- Miscellaneous
- Promotions/Development
- Parks & Rec
- Rink Operations
- Tournaments
- Building Loan

2011-2012 AHA Expense Sources



- Administrative
- Coaching/Referee
- Equipment
- Rink Improvement
- Miscellaneous
- Promotions/Development
- Parks & Rec
- Rink Operations
- Tournaments
- Building Loan