

# Vacationland Figure Skating Club Clubwear



Polar Fleece Princess Seamed VFSC Jacket **\$55.00**

The stretch material will allow you to move gracefully and still keep comfortably warm. This innovative fabric allows the body's moisture to pass through the garment. The back of the jacket has the VFSC logo printed on it. The skaters name will be embroidered on the front left side on the front of the jacket.

Color: Black with White

Fabric: 49% Poly --38% Nylon --13% Spandex

Child Sizes: XS, S, M, L

Adult Sizes: XS, X, M, L, XL

(See manufacturer's size chart on the back side)



VFSC Pants

**\$45.00**

This innovative fabric allows the body's moisture to pass through the garment. The fast-wicking inner surface is comfortable next to the skin. The finish resists odor-causing bacteria.

Color: Black with White Stripe

Fabric: 80% Nylon -- 20% Spandex

Child Sizes: XS, S, M, L

Adult Sizes: XS, X, M, L, XL

(See manufacturer's size chart on the back side)

# Jacket & Pant Size Charts



## JACKET SIZE CHART CHILDREN SIZES

Size	XS	S	M	L
Chest	28"	29"	30	31"
Shoulder	12"	12.5"	13"	13.5"
Waist	25"	26"	27"	28"
Lenth	15"	16"	17"	18"

**Shoulder:** Shoulder Width

**Length:** Body Length from Shoulder

The size charts are based on actual measurements of the garment when relax. The fabric can stretch up to about 40% in length and width when worn.

## JACKET SIZE CHART ADULT SIZES

Size	XS	S	M	L	XL
Chest	32"	34"	36	38"	40"
Shoulder	13.5"	14.5"	15"	16"	16.75"
Waist	28.5"	30"	31.5"	33"	34.5"
Lenth	22"	23"	24"	25"	26"

**Shoulder:** Shoulder Width

**Length:** Body Length from Shoulder

## PANTS SIZE CHART CHILDREN SIZES

Size	XS	S	M	L
Waist	20"	20.5"	21.5"	22.5"
Hip	24"	25"	26"	27"
Thigh	14.75"	15"	15.5"	16"
Inseam	25.5"	27"	28"	29"

**Inseam:** Inseam Measurement includes the 4" extra length for the boots cover at the heels

The size charts are based on actual measurements of the garment when relax. The fabric can stretch up to about 40% in length and width when worn.

## PANTS SIZE CHART ADULT SIZES

Size	XS	S	M	L	XL
Waist	24"	25.5"	27"	28.5"	30"
Hip	28.5"	30"	31.5"	33"	34.5"
Thigh	16.75"	17.5"	18"	18.75"	19.5"
Inseam	30.5"	31.5"	32.5"	33.5"	34"

**Inseam:** Inseam Measurement includes the 4" extra length for the boots cover at the heels



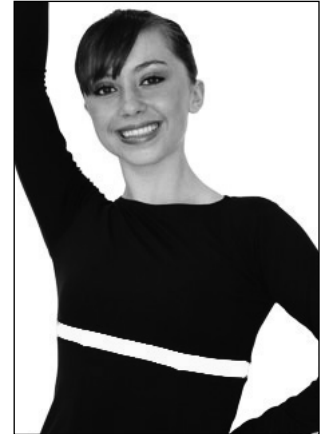


### Boat Neck Long Sleeve Fitted Skate Top

**\$25.00**

Princess Seam Fitted with a contrast color band below the bust line. This shirt is slim & fitted with longer length cover to the mid hip area. Innovative fabric allows the body's moisture to pass through the garment. The fast-wicking inner surface is super comfortable next to the skin. VFSC logo is on the back of the top.

Color: Black with White  
 Fabric: 87% Poly -- 13% Spandex  
 Child Sizes: S, M, L  
 Adult Sizes: XS, S, M, L  
 (See manufacturer's size chart attached)



## Skate Tops Size Charts

### SKATE TOP SIZE CHART CHILDREN SIZES

Size	XS	S	M	L
Chest	27"	28"	29"	30"
Shoulder	11.5"	12"	12.5"	13"
Waist	24"	25"	26"	27"
Length	18"	19"	20"	21"

### SKATE TOP SIZE CHART ADULT SIZES

Size	XS	S	M	L	XL
Chest	32"	34"	36"	38"	40"
Shoulder	13.5"	14.5"	15"	16"	16.75"
Waist	28.5"	30"	31.5"	33"	34.5"
Length	22"	23"	24"	25"	26"

**Shoulder:** Shoulder Width

**Length:** Body Length from Shoulder

### Racer Back Fitted Skate Top

**\$22.00**

Princess Seam Fitted with a contrast color band below the bust line. This shirt is slim & fitted with longer length cover to the mid hip area. Innovative fabric allows the body's moisture to pass through the garment. The fast-wicking inner surface is super comfortable next to the skin. VFSC logo is on the back of the tank.

Color: Black with White  
 Fabric: 87% Poly -- 13% Spandex  
 Child Sizes: S, M, L  
 Adult Sizes: XS, S, M, L



# VFSC Clubwear Order Form

**Please return forms to Melissa Hannah with payment by September 30, 2010.**

**Name:** \_\_\_\_\_

**I am a:**

\_\_\_\_\_ **Basic Skills Skater**

\_\_\_\_\_ **Jr Club Skater**

\_\_\_\_\_ **Sr Club Skater**

**VFSC Jacket.....\$55.00**

<u>Size</u>	<u>Qty</u>	<u>Amount</u>
Child X-Small	_____	\$ _____
Child Small	_____	\$ _____
Child Med.	_____	\$ _____
Child Lg.	_____	\$ _____
Adult X-Small	_____	\$ _____
Adult Small	_____	\$ _____
Adult Med.	_____	\$ _____
Adult Lg.	_____	\$ _____
Adult XL	_____	\$ _____

Name Embroidered on the Jacket (Print): \_\_\_\_\_

**VFSC Pants.....\$45.00**

<u>Size</u>	<u>Qty</u>	<u>Amount</u>
Child X-Small	_____	\$ _____
Child Small	_____	\$ _____
Child Med.	_____	\$ _____
Child Lg.	_____	\$ _____
Adult X-Small	_____	\$ _____
Adult Small	_____	\$ _____
Adult Med.	_____	\$ _____
Adult Lg.	_____	\$ _____
Adult XL	_____	\$ _____

**VFSC Racer Back Skate Top.....\$22.00**

<u>Size</u>	<u>Qty</u>	<u>Amount</u>
Child X-Small	_____	\$ _____
Child Small	_____	\$ _____
Child Med.	_____	\$ _____
Child Lg.	_____	\$ _____
Adult X-Small	_____	\$ _____
Adult Small	_____	\$ _____
Adult Med.	_____	\$ _____
Adult Lg.	_____	\$ _____
Adult XL	_____	\$ _____

**VFSC Boat Neck Skate Top.....\$25.00**

<u>Size</u>	<u>Qty</u>	<u>Amount</u>
Child X-Small	_____	\$ _____
Child Small	_____	\$ _____
Child Med.	_____	\$ _____
Child Lg.	_____	\$ _____
Adult X-Small	_____	\$ _____
Adult Small	_____	\$ _____
Adult Med.	_____	\$ _____
Adult Lg.	_____	\$ _____
Adult XL	_____	\$ _____

**Total Amount Enclosed.....\$ \_\_\_\_\_**