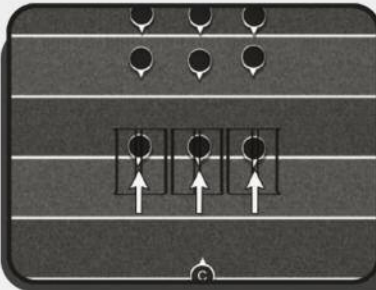
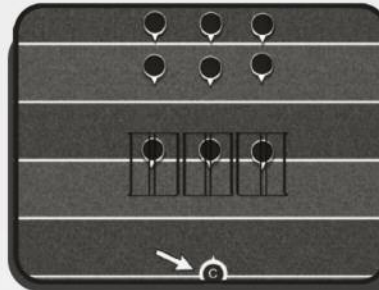


Chutes



01 ★
Blockers line up behind chutes



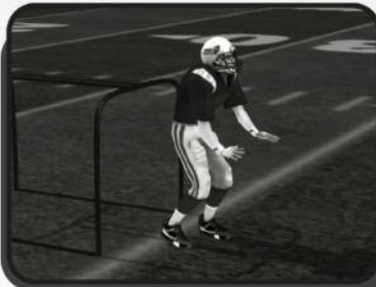
02 ★
Coach sets up across from linemen



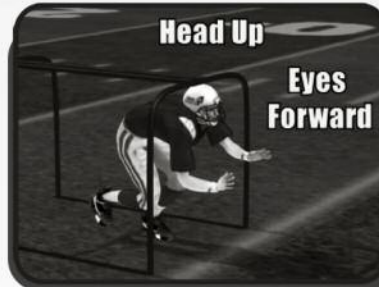
03 ★
Blockers explode out of stance and move through chutes



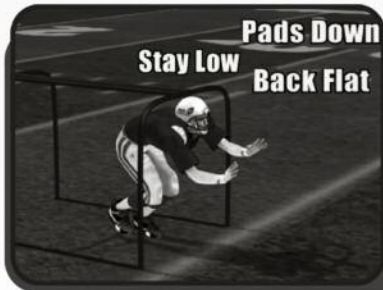
04 ★
They begin with proper stance and explode on first step



05 ★
First step must not be too long



06 ★
Linemen keep head and eyes up



07 ★
They must stay low, keeping pads down and back flat

Notes:

Blank area for notes.