

Ice Times

JULY/AUGUST 2008

Mark Your Calendar:

August 24th
Registration Night

September 15th
Compressors Go On!!!
New Skater Registration

INSIDE THIS ISSUE:

Changes	pg 2
Referee Seminars	pg 3
Extended Evaluations	pg 4, 5
Learn to Skate	pg 5
Volunteers Needed	pg 5
Parent Meetings	pg 6

Welcome!

Another great season of Marshfield Youth Hockey is about to get underway! The MYHA Board works year round to provide a wonderful place to play and to enjoy the great game of hockey.

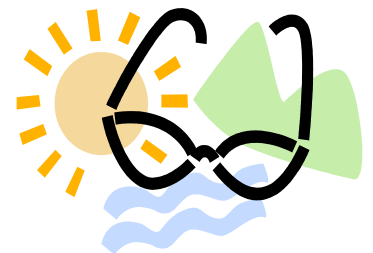
During this past summer, there have been some changes made to the programs and some ideas for facility improvements that are moving forward. Please pay special attention to the article about Extended Evaluations and about the Learn to Skate-Hockey Style program. Our new website offers up to date information on our Association. I encourage you all to register on the site to get access to information not available to the casual user. Work hours have been "tweaked" a bit along with the incentives for fundraising. Plans to add an attached zamboni shed, lockerrooms and showers are being finalized. We also welcome the addition of the High School Tiger Girls team. This will be their 1st year skating as a WIAA team.

As you can see, it has been a busy summer for the MYHA Board but it has been productive. The Board is interested in your thoughts and ideas of how to improve our rink and our programs. Please feel free to share them with any Board member throughout the year. We want your entire family to have good memories while with MYHA.

Enjoy the last month of summer....and see you at the rink!

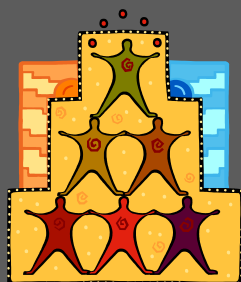
Brenda Baur

MYHA President



MYHA MISSION STATEMENT

- To promote the enjoyment of youth ice hockey and skating.
- To emphasize sportsmanship, teamwork and fun.
- To develop ice hockey and skating skills through organized coaching in a positive learning environment.
- To nurture self esteem and mutual respect.



Fees, Registration, Work Hours & Buyout Changes!

With any new season come changes. Some are big, some are small, but all of them are necessary to keep MYHA growing, stable and meeting our financial obligations. Please be sure to read through these changes, as they will affect you this coming season!

FEES:

Good news! The MYHA Board has approved to hold the youth fee structure for the 2008/09 season, meaning that fees will not go up this year. In this time of rising fuel and food prices, they have made this commitment in order to retain MYHA membership numbers. (I know my pocket-book thanks them!)

REGISTRATION:

Members can register Sunday, August 24th from 6pm to 8 pm at the rink. Here's a change: During this time, we WILL NOT fit equipment or hand out jerseys. (That will be done during team parent meetings closer to the start of the season — and deposits will be required at that time.) And, all your credits and/or fines will be filled in on the registration paperwork, so you do not need to be present to register. We are encouraging registration by mail this year, AS LONG AS it is received by August 24th. After August 24th, you will be charged a late fee.

Another change is a two payment plan option. To take advantage of this, just send two checks with your registration with at least half the amount on the first check dated August 24, and the balance on the second check dated November 1. We will hold and cash the second checks after November 1st. And, regarding payment, we will have a "no pay, no play" policy. If fees are not paid in full by November 1st, your child will not be allowed to play until they are paid.

WORK HOURS:

Work hour requirements have been increased, so please carefully read the Work Hour Requirements portion on the back of your registration. Basically, MYHA has increased the work hours required to 15 hours for a mini-mite or first year family, and 20 hours for returning families up to 40 hours per family. Of those hours, 4 shifts (or 12 hours) will be for concessions, and the remaining hours will be help with other on-ice and game-type activities. Again, read the back of the registration form for the specifics.

BUY-OUTS:

Buying out of concessions, work hours and fundraising is still an option, but the buy-out fees have increased. Concessions will require a \$300 buy-out, work hours (required hours less concession hours x \$25/hr) can range from \$200 to \$700 for the buy-out, depending on your required hours, and the fundraising buy-out is \$200. Remember, there are no paid employees of MYHA, so we rely on volunteers to get the work done.

NEW SITE ADDRESS!

Visit us on the web: www.myhahockey.org

Interested in Refereeing Hockey This Year?

by John Baur

If you will be 12 years of age by November 1, 2008, you are eligible to become a referee.

Why officiate?

- You can earn money.
- To further develop your skating skills.
- To gain a better understanding of the rules and the game.
- To develop interpersonal skills and confidence by interacting with players and coaches.



Anyone that is interested in refereeing youth hockey games this year must take the USA Hockey Officials test and attend a Wisconsin Hockey Officials Association (WFOA) seminar. If you are an adult, USA Hockey is also requiring you to participate in a background screening program. If this will be your first year, you can apply for the USA Hockey Officials test at the seminar. Otherwise, if you were a registered referee last year, you should be receiving your application in the mail later this summer.

- Pre-registration is required and begins August 4. On-line registration and additional information is available at www.wiho.org. Please do not wait to register as there are a limited number of seats available.
- Walk-ins and individuals without pre-registration will only be accepted on a space available basis, first-come, first served. There is an additional \$50.00 surcharge for all walk-ins who are not pre-registered.
- All seminars start promptly at 9:00 a.m. and end at approximately 5:00 p.m. Please bring a pen/pencil and paper for taking notes. Also bring your rule book if you have one.
- Level 1 and new officials are required to have a hockey helmet and ice skates for the on-ice sessions. All Level 2, 3, and 4 officials are expected to be in full officiating gear for the on-ice sessions.
- Car pooling to the various seminars should be available. Please let me know if you need transportation or are willing to help transport our younger referees.

* Should you have any further questions or need assistance in the pre-registration process, please call John Baur at 384-5911 or email him at jbkg@charter.net.

2008 Local Seminar Schedule

September 13 Rhinelander

September 20 Stevens Point

September 27 Appleton or Sparta

October 11 Wisconsin Dells

October 12 Waupaca

If these dates or locations do not fit into your schedule, there is a full listing of seminar dates and locations for the entire state at www.wiho.org.

Website Update

by Pat Andreae

I'd like to remind members about registration on our new web site to view "registered members only" tabs. These are kept hidden from public view, as they do not need to be viewed by anybody who decides to check out the site. So far, less than half of the registered families have set up accounts.

When you register and log in, you will see two different colored tabs. The red ones are tabs that the casual viewer can see. The gray ones are limited to registered users only. Topics/documents that MYHA feels should be restricted and viewed only by registered users will fall into this category. As the season begins, and as team and coaches are named, I will grant access to your team sites to add news, photos, scores and statistics. If you have questions about the new site, please feel free to e-mail pandreae@charter.net.



MYHA Extended Evaluations by Pat Andreae

During our MYHA Coaches Committee meetings, there has been a question that has been repeatedly raised: "Are two hours twice on a single weekend enough to evaluate and place skaters on a team?" Because this has been an ongoing issue, the Coaches Committee has decided to go forward with a new process that other associations in the area use for evaluations, and with great success.

Instead of having traditional tryouts, we will have extended evaluations from the beginning of the season, and ending with the formulation of teams by November 17. Why the change? Well, it allows for coaches to better evaluate ALL players at a given age level, and gives them more time, including actual game time, to evaluate and properly place each skater on the appropriate team.

The concept is simple. Each level has scheduled practices before the game season begins. There would be 4-6 weeks of practices (depending on when the ice is ready), 2-3 times per week, 1-2 hours/session. That's up to 6 hours per week of ice time of organized practice for 4-6 weeks. In the past we've have "open hockey" before tryouts, which has been poorly attended. Generally 75% of the players did not show up at any given time. This was done for a few weeks, then tryouts were set up, and players were assigned to teams. After that, team practices began, allowing for only 1-2 weeks before games began, hardly enough time for coaches to set up a team. Most teams went into the season less prepared than area teams, and did not begin to find their groove until mid-season. This also worked against the kids that missed tryouts due to fall sport injuries, illness, or family commitments, and were automatically placed on the B team, regardless of their talent level.

Within the first few weeks, the head coaches are going to know who their true A and B skaters are. It's the majority of the kids who fall into that "bubble" category that need the most time to be evaluated and properly placed on their respective teams. These kids would have 4-6 weeks of practice to show their stuff, and demonstrate their attitudes and work ethics to the coaches. Plus kids react differently in game situations. There will be two weekends of games for coaches to evaluate these kids. They may be in B games one weekend, and A games the next. This allows the coaches to see the skaters potential and reactions in a game situation, and place them in the level that will best suit their abilities. After the final games of the weekend of Nov. 15-16, the coaches will make their decisions, and official rosters would be posted on Nov. 17.

The beauty of this system, is that EVERYBODY gets a fair shot. Again, some kids come into the season injured from a fall sport. Some are ill at tryouts. Some are on vacation with their families. Some just have a bad tryout. At this level, none of these factors should matter. And that's where the extended evaluations come into place.

(Continued on bottom of page 5...)



NEW SITE ADDRESS!

Visit us on the web: www.myhahockey.org

Learn Skate — Hockey Style! by Jack Bremer

Coming this fall on Mondays Oct 6 through Nov 3 from 6:30 pm to 7:30 pm is a new program for beginners: Learn to Skate - Hockey Style. Equipment will be available for use at no charge and the cost to skate is free. Instructors will be on the ice. Please tell you neighbors and friends. This is for any age. More on this new program at registration time or check out the Learn to Skate tab at www.myhahockey.org



Volunteers Needed: Dog Show Concessions

Want to get a jump on your work hours for the 2008/09 season? Workers are needed for concessions for the Dog Show being held Aug. 15-17. A variety of shifts are available. Hours will be applied to 2008/09 hours. Please contact Lori Remeika at remeikalori@yahoo.com, or Brenda Baur 387-1685 if you are available to help.

Extended Evaluations (continued)

The kids who want to be on the A team can show they deserve to be A's by giving 110% and displaying the right kind of attitude. Kids who think they deserve to be on the A team but don't work hard, have a bad attitude, or don't show up at practice, will be exposed during a 4-6 week period of practice. Competition amongst the kids is the best development tool.

In summary, the benefits to an extended evaluation system are as follows:

- Practices at team levels begin as soon as the ice is in, allowing each level the possibility of 5-6 hours of ice time/week for 4-6 weeks, vs. poorly attended open hockey for the majority of the pre-season.
- Everybody gets a fair shot. If skaters miss a practice or two because of fall sports, meetings, or family gatherings, it will not factor into where they are placed, vs. not being able to attend traditional try-outs and automatically being placed on the B team. It exposes the complete player.
- Intangibles such as attitude, attendance, and work ethic can be considered with an extended evaluation, vs. not being noticed/considered during traditional tryouts.

All players will be evaluated using forms from the USA Hockey manuals, according to skater or goalie position.

The coaches will have these evaluation forms to complete on each player, and will be kept in their possession throughout the evaluation and selection process.

We are confident that this will be a successful alternative to the traditional tryout, and will present our results/parent feedback to the MYHA BOD at the end of the season. Again, with talking to other associations who have tried this method, it has proved very successful, and parents have been generally pleased with the selection process.

If you have any further questions, there will be a table at registration to answer any and all questions. We will also be at the mandatory parent meeting before the season begins to review the extended evaluation process.



Building Committee Update

by David Bjarnason

The Building Committee met this past week to review plans for the new addition to the Hockey Rink.

The addition will include 3 new locker rooms with showers off 2 of the rooms, plus an enclosed room for the Zamboni (no more outdoor trips). One of the early tasks is to solve the plumbing requirements, and that is being evaluated by Pat Schreiner. Others on the Committee beside myself include Tom Seyfert, Jim Edwards and Lyman Smith. There is money in the MYIce accounts that hopefully can be transferred to the present building project, and if so can cover part of the cost.



We will be forming a Finance Committee to oversee fund raising to make up the rest. At present, the Committee feels that total cost can be held under \$200k. We will know much more over the next month as to the final plans and cost. If everything, including financing, falls into place over the next month or so, we look forward to start building this fall, and the members of MYHA will be kept well informed as to the progress of this project.

Swap Table — Aug. 24th & Sept 15th Registration Nights

What hockey family doesn't have a basement full of outgrown — but still viable — hockey equipment! Well, here's our answer to a garage sale ... a swap table. First, we need a volunteer to man the table on the nights mentioned, from 5:30 to 8 pm. Then, members can bring their equipment, marked with an asking price and envelope. When sold, the money goes into the envelope, which the seller picks up at 8 pm. Any money or equipment left at the table is donated to MYHA. Watch the web site as we get closer for more details.



Parent Meetings — Jersey Handout



NEW for this season! We will be holding parent meetings for each level of skaters. These meetings will occur the first weeks of October. While your child is practicing, parents will hear about the new changes to the programs and expectations for the season. ***The night of the meeting, jerseys and game socks will also be given out.*** We are **NOT** handing these out at registration this year. Please note that you will need to bring a check for your jersey deposit or equipment rental to that meeting.

Please mark your calendars:

Club-----Tues., Oct. 21----7 p.m. ** includes players and parents

Bantams----Mon., Oct. 20 ---7 pm. ** includes players and parents

PeeWees---Tues., Oct. 14 ---6:30 p.m.

Squirts-----Mon. Oct. 13----5:15 p.m.

Mites-----Mon., Oct. 13----6:45 p.m.

Girls-----Tues., Oct 14 ----7:45 p.m.

Mini-mites-Mon., Nov. 3-----6:30 p.m.



Tiger teams (both boys and girls) will hold their meetings when the season begins in November.